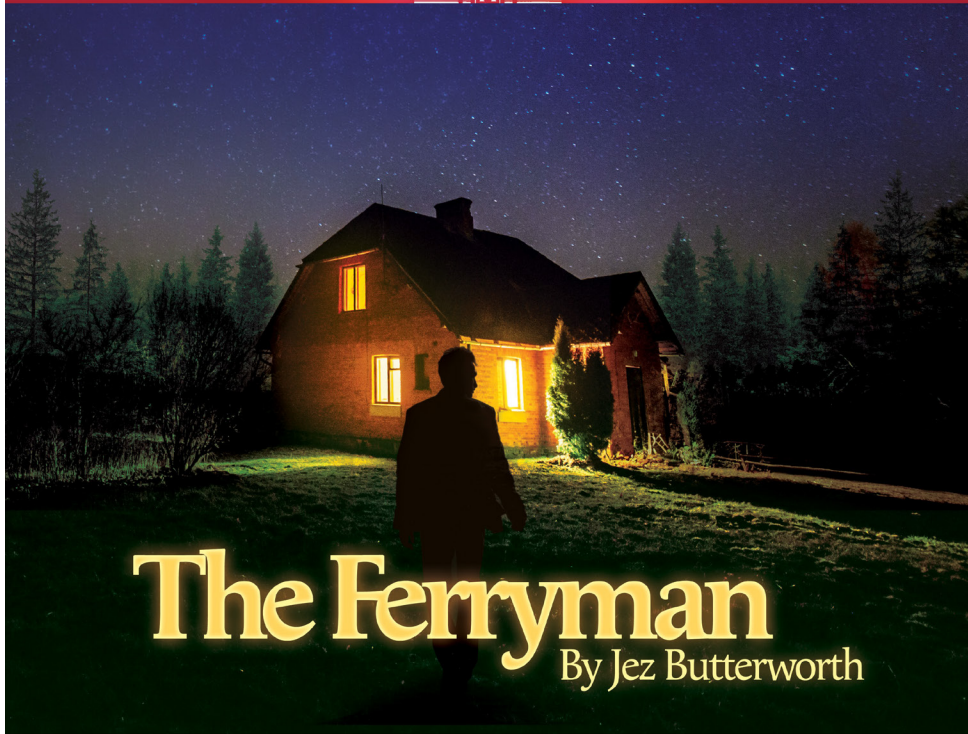


**THE Winni
PLAYERS**

Community Theatre at
the
WINNIPESAUKEE
playhouse

2024 SEASON



The Ferryman

By Jez Butterworth

APRIL 25-28

SPONSOR:

Supporting the Arts
LAURA & GARY STEPHAN
In loving memory
Dorothy Marie Schrader
Gerald Lewis Schrader

WINNIPESAUKEEPLAYHOUSE.ORG

603.279.0333

33 Footlight Circle, Meredith NH 03253



Meredith Marina

603.279.7921



BOAT RENTALS & Jet-Ski Rentals



Water-Ski
& Tubing
Packages
Available!

Make A Splash!

One of the largest
BOAT RENTAL FLEETS
on Lake Winnepesaukee!



NEW & USED BOAT SALES

Hunter

tió
ADAPT

Sweetwater

Sanpan

Aqua Patio

Premier
Pontoons

MARINE STORE & BOATING ACCESSORIES

603-279-7921



BOAT SALES • BROKERAGE • VALET • SERVICE • RENTALS • STORAGE

2 Bayshore Drive, Meredith, NH • Meredith Bay • Lake Winnepesaukee



www.meredithmarina.com

Board of Trustees

Renee Speltz
Chair
Retired Mental Health Counselor and
Consultant

Bill Bald
Vice Chair
President
Melcher and Prescott Insurance

Raymond Abramson, CPA
Treasurer
Owner
Abramson & Company, LLC

Kaitlin M. O'Neil
Secretary
Attorney
Normandin, Cheney & O'Neil, PLLC

Members at Large

Eden Unger Bowditch
Author and Lecturer
Plymouth State University

Julie Hirshan Hart
Editor
The Laconia Daily Sun

Lesley Pankhurst
Co-Founder and Patron and
Company Services Director
The Winnepesaukee Playhouse

Kathleen Sweeney, CPA
Owner
Kathleen Sweeney CPA

Jacqueline K. S. Truesdale
Concord, NH & Loudon, NH



Artistic Director.....Timothy L'Ecuyer
Managing Director.....Thom Beaulieu
Patron & Company Services Director.....Lesley Pankhurst
Dir. of Education & Community Engagement.....Cory Lawson
Production Manager.....Amanda Dickinson
Bookkeeper.....Donna Findlay

*The Winnepesaukee Playhouse
has many volunteer
opportunities. To find out how
you can become a volunteer,
contact us at
info@winnisplayhouse.org*

The Winnepesaukee Playhouse
33 Footlight Circle, Meredith NH 03253
Tel. (603) 279-0333

www.winnepesaukeeplayhouse.org



For Your Information

Please turn your cell phone and any other electronic devices completely off. Leaving them on silent or vibrate may interfere with our communication systems and interrupt the flow of the performance.

Please refrain from photography or recordings of any kind, as this violates our royalty agreements.

Please note that if you must, in an emergency, use the restrooms during the performance, our House Manager will return you to your seat at an appropriate break in the performance.

Please be sure you can hear us! For our theatre patrons who have experienced varying degrees of hearing impairment, please take advantage of our state-of-the-art **Assisted Listening System**.

If you are a hearing aid user who has a tele-coil function in your hearing aid you will be able to access our system directly after turning on that function. You may need to contact your hearing aid provider to inquire about the tele-coil in your particular hearing aid and ensure that it has been activated and instructed on how to turn it on when you are in the theatre. For patrons without tele-coil hearing aids, we have a limited number of headsets available on a first-come, first-served basis. Please see the box office if you would like to use one.

The Assisted Listening System is made possible by a generous donation from The Maurice and Rhoda Miller Endowment Fund.

Please keep in touch! Visit our website at www.winnipesaukeeplayhouse.org to join our email list. You can also follow us on Facebook and Instagram.

Dear Friends,

On behalf of everyone at the Winnepesaukee Playhouse, it is my great privilege to welcome you and thank you for joining us for the 2024 Season! I am constantly inspired by the remarkable passion of this community. I am grateful for the skilled artists who bring theatre to life on our stage, the intrepid staff members who create and maintain the structures and pathways underpinning the work, the members of our dedicated board of trustees who see to the health and longevity of the organization, and especially you—the patrons who engage in the work with generosity, openness, and vigor.



Engaging with the arts, especially theatre, has always helped me wrestle with big questions. It does this by narrowing the aperture and challenging me to focus on specific human stories—both those that are familiar and those that are outside of my experience. A mentor of mine is fond of summarizing this by saying that “theatre is the gym for the empathy muscle.” Tales of students in a ridiculous school surviving the antics of their outrageous teachers, members of a family in Northern Ireland trying to hold on to hope and each other in the midst of *The Troubles*, a play telling the story of the arrival of the literal devil... all of these stories can help transform the incomprehensibly large into something more navigable.

During an election year, I often find myself wrestling with big questions about power. As we take part in this important national debate, my thoughts can tend a little toward the metaphysical: How should an individual ethically obtain and use power? What do we give up when we prioritize seeking power? What restrictions should be imposed on it? Is there any way to prevent structural inequities from continually granting power to only a select few? I also think a lot about the obligations those in power have to those who lack it.

Then, typically, I roll over in bed and tell myself for the fifth time that I really need to go to sleep because I have to be awake in a few hours.

I don't expect any of us will walk out of the theatre today with simple, concrete answers to big questions about power or, frankly, anything else. But I know it's worth engaging in the conversation with openness and empathy. I'm so grateful we're here together to do that. Maybe the hours we spend here will equip us with a few new ways of talking with each other, something we can all use as Election Day draws closer.

Thank you for engaging with this work—for being part of this community.

Timothy L'Ecuyer
Artistic Director

Supporting the causes you care about
and the communities we call home.

We bank on kindness.



Proud Supporter of
The Winnepesaukee Playhouse



BNH.Bank
Member FDIC



FIND YOUR ESCAPE!

DOWNTOWN MEREDITH
603.279.3905
312 Daniel Webster Hwy

DOWNTOWN LACONIA
603.409.6756
630 Main St.

www.innisfreebookshop.com



**BIG ENOUGH TO SERVE YOU.
SMALL ENOUGH TO KNOW YOU.**

NORMANDIN, CHENEY & O'NEIL, PLLC
ATTORNEYS AT LAW

Experience you can rely on. Advice you can trust.

*Wills, Trusts and
Estate Planning
Real Estate and
Land Use*

*Commercial and Corporate Law
Injury Law
Civil and Criminal Litigation*

603-524-4380
(or 1-800-529-0631)
www.ncolaw.com

*213 Union Avenue
P.O. Box 575
Laconia, New Hampshire 03247*

We are a charitable organization which exists to meet the health needs of individuals within the communities **we serve.**

CONCORD HOSPITAL
Your Regional Health System

CONCORD | FRANKLIN | LACONIA

concordhospital.org

*We are thrilled to support
The Winnepesaukee Playhouse
Temple B'nai Israel*

Laconia, NH



Temple B'nai Israel



TBINH.ORG

*The Center of Jewish Life
in The Center of New Hampshire*



Fire & Water -
Cleanup & Restoration™

**FASTER TO
ANY SIZE
DISASTER**



SERVPRO OF THE LAKES REGION
603-527-2518

Like it never even happened.®

2024 SHOW LISTINGS

PROFESSIONAL THEATRE

June 21-July 6: Jersey Boys

The Story of Frankie Valli & the Four Seasons

Book by Marshall Brickman and Rick Elice, Music by Bob Gaudio,

Lyrics by Bob Crewe

Sponsored by:



A jukebox musical that's "just too good to be true!" With phenomenal music, memorable characters, and great storytelling, **Jersey Boys** follows the fascinating evolution of four blue-collar kids who became one of the greatest successes in pop-music history. Winner of both the Tony and Olivier Awards for Best Musical, the show features chart-topping hits including "Sherry," "Big Girls Don't Cry," "Can't Take My Eyes Off You," and more!



July 11-20: Witch

By Jen Silverman

Sponsored by:



The devil comes to town
This fiendishly funny and anachronistically contemporary play is a mature and inventive retelling of a Jacobean drama. The arrival of Scratch, the literal devil, tempts the residents of Edmonton to confront – and perhaps indulge – their darkest wishes... in exchange for their souls. Elizabeth should be his easiest target, having been labeled a "witch" and cast out by the town, but her soul is not so readily bought. Has the devil met his match?



2024 SHOW LISTINGS

PROFESSIONAL THEATRE

July 25-August 3: La Cage aux Folles

Book by Harvey Fierstein, Music and Lyrics by Jerry Herman

Based on the play by Jean Poiret

The Broadway smash hit musical comedy!

The “rather gaudy, but also rather grand” winner of six Tony Awards including Best Musical, Best Score, and Best Book, **La Cage aux Folles** is a musical comedy about family that is filled with glitz, glamour, and drag queens! Based on the hit French farce that also inspired Hollywood’s **The Birdcage**, this Broadway smash includes favorite songs like “I Am What I Am” and “The Best of Times.” It encourages us all to stay true to ourselves.

Sponsored by:



August 8-17: Richard III

By William Shakespeare

“Every tale condemns me for a villain”

Performed as a heated presidential election in the United States ramps up, the story of Shakespeare’s most notorious antihero asks us to consider the price that we pay when we seek power. A small, powerful ensemble of actors brings this classic story to new life in a contemporary production that reverberates with fresh relevance.

Sponsored by:


NORMANDIN, CHENEY & O'NEIL, PLLC
ATTORNEYS AT LAW


98.3 fm
Frank

2024 SHOW LISTINGS

PROFESSIONAL THEATRE

August 22-September 1: *In the Heights*

Music and Lyrics by Lin-Manuel Miranda, Book by Quiara Alegría Hudes

Conceived by Lin-Manuel Miranda

Lin-Manuel Miranda's first Broadway hit!

In the Heights tells the story of a vibrant Latinx community in New York's Washington Heights neighborhood – a place where the coffee from the corner bodega is light and sweet, the windows are always open, and the breeze carries the rhythm of three generations of music. It's also a community on the brink of change, full of hopes, dreams and pressures, where the biggest struggles can be deciding which traditions you take with you, and which ones you leave behind.

Sponsored by:

Supporting the Arts
LAURA & GARY STEPHAN
In loving memory
Dorothy Marie Schrader
Gerald Lewis Schrader

October 19, 26-27: *A Year with Frog and Toad*

Music by Robert Reale, Book and Lyrics by Willie Reale

Based on the books by Arnold Lobel

A timeless story of friendship

Arnold Lobel's well-loved books have been turned into a whimsical show following two great friends – the cheerful, popular Frog and the rather grumpy Toad – through four fun-filled seasons. With an upbeat score and lots of laughs, *A Year with Frog and Toad* is the ultimate family musical.

Professional Theatre for Young Audiences

Sponsored by:



Delivering on **A promise.**



2024 SHOW LISTINGS

EDUCATION DEPARTMENT

February 9-18: Mr. Burns, a post-electric play

By Anne Washburn, Score by Michael Friedman, Lyrics by Anne Washburn

A tale of survival... and the enduring power of The Simpsons

In this dark comedy, a group of post-apocalyptic survivors make sense of an environment that no longer makes sense by recreating their vanished world through storytelling (some of it featuring Bart Simpson), turning the pop culture of our era into the mythology of the future.

Performed by students ages 13-18

Sponsored by:



NEW
HAMPTON
SCHOOL

February 10-17: Sideways Stories from Wayside School

Adapted by John Olive, Based on the novels by Louis Sachar

The silliest stories from the strangest school!

This hilarious play based on Louis Sachar's beloved book series explores the happenings at Wayside School, which is kind of a strange place. It's thirty stories high with only one classroom per story. (Well, actually, only twenty-nine stories high, because Miss Zarves on the 19th floor doesn't exist.) Whether it's teachers turning students into apples or the cow hiding in the classrooms, all is not normal at this mysterious school. Performed by students ages 8-13.

Sponsored by:



NEW
HAMPTON
SCHOOL

 **DELTA DENTAL**

2024 SHOW LISTINGS

COMMUNITY THEATRE

February 22-25: The Sherlock Mystery Radio Hour

A Live Radio Drama

Based on the works of Sir Arthur Conan Doyle

A Yearly Tradition!

The Winni Players' annual live radio play is back! Step back in time to when radio was king and the family gathered around it for their favorite dramas. This year you will get transported into the captivating world of Sherlock Holmes and Dr. John Watson. Join us for an evening filled with suspense, deduction, and intrigue as we present two riveting radio-play adventures featuring the great detective himself: "The Case of the Haunted Chateau" and "The Case of the Iron Box".

Sponsored by:



April 25-28: The Ferryman

By Jez Butterworth

A "fiercely gripping play." - The New York Times
County Armagh, Northern Ireland, 1981. The Carney farmhouse is a hive of activity with preparations for the annual harvest. A day of hard work on the land and a traditional night of feasting and celebration lie ahead. But this year they will be interrupted by a visitor. Winner of the Tony Award for Best Play, it's a powerful exploration of humanity's resilience and the unspoken secrets of Ireland's past.

Sponsored by:

Supporting the Arts
LAURA & GARY STEPHAN
In loving memory
Dorothy Marie Schrader
Gerald Lewis Schrader

2024 SHOW LISTINGS

SPECIAL EVENTS

March 1-3: On the Exhale

By Martin Zimmerman

When tragedy strikes, take a breath and get a grip

When a senseless act of violence changes her life forever, a liberal college professor finds herself inexplicably drawn to the very weapon used to perpetrate the crime--and to the irresistible feeling of power that comes from holding life and death in her hands. Peering down the barrel of a uniquely American crisis, she begins to suspect that when it comes to gun violence, we're all part of the problem. This is the New Hampshire premiere of Martín Zimmerman's gripping play, which draws you into the white-hot center of our country's most urgent debate.

Presented by



About theatreKAPOW
theatreKAPOW (www.tkapow.com)
develops ensemble productions of great dramatic literature to explore the human experience and inspire and challenge both artist and audience. We put stories on stage and create a safe space to start conversations to begin to heal communities, families, and hearts.

November 16: ImprovOlympics!

Join teams from local non-profit organizations for a night of improv comedy and fundraising! This popular event will pit local amateur comedians against each other in a **Whose Line Is It Anyway?** battle to make you laugh and raise funds for worthy local causes.

Are you associated with a local non-profit and would like to get involved?
Email info@winniplayhouse.org to find out how you can put a team together!

2024 SHOW LISTINGS

EDUCATIONAL AND COMMUNITY THEATRE

December 11-15: Roald Dahl's Matilda the Musical

Book by Dennis Kelly, Music & Lyrics by Tim Minchin

Sometimes you have to be a little bit naughty!

In 2010, Dahl's beloved children's book leapt to the stage bringing his characters to life with dynamic songs and innovative staging, winning 16 Best Musical awards! It's the inspiring story of an extraordinary girl with an unbounded imagination who proves that, despite the odds, you can do anything you put your mind to.

Performed by local adults and students ages 8 and above.

Sponsored by:

Supporting the Arts
LAURA & GARY STEPHAN
In loving memory
Dorothy Marie Schrader
Gerald Lewis Schrader



The Winnepesaukee Playhouse Education Department promotes the developmentally appropriate acquisition of theatrical skills, fosters a life-long appreciation of the technique, history, and literature of theatre and its ancillary fields of study, and—above all—seeks to inspire its students to use theatre as a tool to develop empathy, with which they may explore and come to better understand the world.



The Winni Players Community Theatre uses live theatre to provide its members with opportunities for artistic expression, personal growth, and friendship.

We build community through theatre.

We're in Your Corner

People today can spend nearly half their lives over the age of 50. That's a lot of living. So, it helps to have a wise friend and fierce defender like AARP in your community.

Find us at aarp.org/nh.



Caring has always been at the heart of everything we do. By building and nurturing relationships, we can cultivate a community where we all thrive.



800.922.6872 mvsb.com

HART'S TURKEY FARM Restaurant



233 Daniel Webster Hwy
Meredith, NH 03253
603-279-6212
hartsturkeyfarm.com

Regular
Children &
Mini
Menus
Available
Gift Shop
Catering



DELTA DENTAL

www.nedelta.com

IRWIN AUTOMOTIVE GROUP

603-524-4922 | irwinzone.com

Serving New Hampshire Since 1951

59 Bisson Avenue Laconia, NH

446 Union Avenue Laconia, NH



OVERHEAD DOOR OPTIONS LLC

603-279-5700

185 Waukewan Street, Meredith, NH
www.OverheadDoorOptions.com



LiftMaster

Overhead Doors Options, LLC. offers a wide variety of quality residential and commercial garage doors and openers. We provide prompt, professional maintenance and repair service on all makes and models of garage doors.

A FAMILY OWNED AND OPERATED GARAGE DOOR COMPANY SERVICING THE LAKES AND WHITE MOUNTAIN REGIONS FOR OVER 30 YEARS!



Visit our Showroom • We have 10 full doors on display

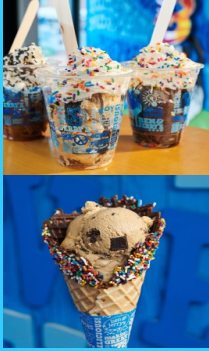


**BUY ONE GET
ONE 50% OFF!**

Open 'til 10pm daily

**Mill Falls Marketplace
Meredith
603-279-2200**

*Equal or lesser item is free.
Excludes merchandise, pints & quarts.
Expires 12/2024*



As-Seen on the Phantom Gourmet!

**Get 10% OFF
With This AD!***



**Amazing dining
Before or after the show!**



blue
bistro

The Finest Steaks & Seafood
on Winnepesaukee

- Brilliantly Crafted Cuisine Overlooking the Lake
- USDA Prime Beef, Fresh Seafood & Exquisite "HopeMade" Desserts
- Live Music | Bountiful Gourmet Breakfasts
- "The TOP SPOT to EAT on Lake Winnepesaukee!" - Phantom Gourmet

NazBar
Grill

A Seriously Good Time!

- Lunch, Dinner & Fabulous Tropical Drinks - Waterside!
- LIVE Bands on the Beach
- Spectacular Sunsets!

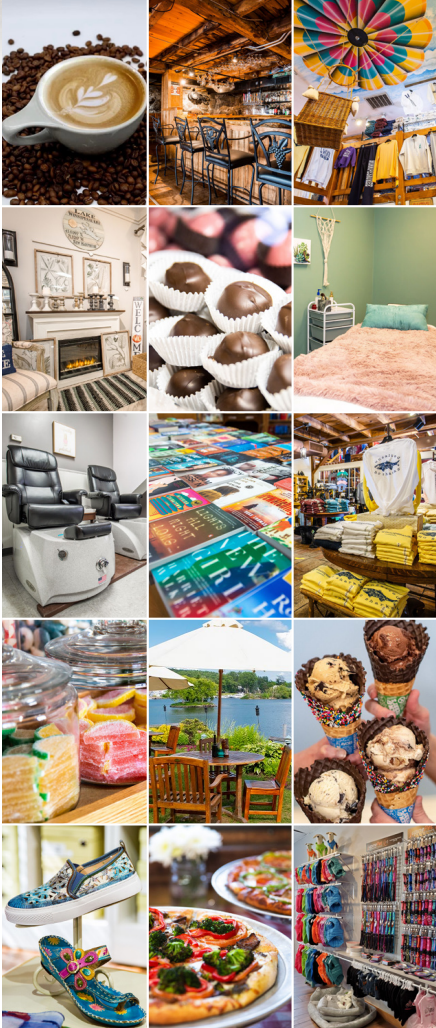
* With purchase of one entree. Cannot be combined with other offers. Valid through 10/1/24 at The Blue Bistro or NazBar & Grill.



1086 Weirs Blvd. - Laconia, NH | 888.55.NASWA | naswa.com



SHOP. DINE. EXPLORE.



Lakes Region's Premier Shopping Destination

Unique Marketplace Shops
5 Distinctive Restaurants • 4 Inns
Boardwalk, Park & Sculpture Walk
Friday Night Music - July & August

millfalls.com/Marketplace • Routes 3 & 25 Meredith, NH



Proud to partner with Winnepesaukee Playhouse to provide another season of spectacular performances.

Named Best-In-State Banks for NH by Forbes Magazine 2022



FSB
Franklin Savings Bank
FSBNH.BANK



#HappyUp at The Studio!

Experience the Lakes Region's most joyful and eclectic shopping experience for yourself!



598 Main Street, Laconia, NH
603-524-8008 • thestudionh.com

the
WINNIPESAUKEE
playhouse

FOLLOW US ON



Construction Management
Construction Services



"Progress on Purpose"
Since 1969

51 Church Street, Laconia, NH
www.bpsnh.com 603-524-3411

LaValley
BUILDING SUPPLY

www.lavalleys.com

603-524-1692

32 Gilford East Drive, Gilford NH

Hours of Operation:

Monday - Friday: 7am-5pm

Saturday: 8am-3pm

Sunday: Closed



There are many things that make Lovering different. It's not just about selling & servicing high quality vehicles. We believe life is about doing the things you love with the people you care about.

- Family-Owned & Operated Since 1996
- 6th Largest Women-Run Business in NH*
- Top 10 Nationwide for Best Customer Service Reputation**
- A Mission of Giving Back to The Community

*Business NH Magazine (October 2022 Issue). **Reputation (Automotive Industry Reputation Report 2022).



LOVERING
VOLVO CARS MERCEDES

We are proud to be the largest luxury brand north of Concord for both Sales and Service.

lovingmeredith.com | (603) 279-8000
201 Daniel Webster Highway
Merridub, NH 03253

MISIASZEK
TURPIN



Celebrating two decades of client-dedicated design
residential | non-residential | historic preservation



Melcher & Prescott INSURANCE

KNOWLEDGE. TRUST. CONFIDENCE.



Since 1862 Melcher & Prescott Insurance has been a proud sponsor of the arts and culture in our community.

Our local professional staff are here to assist you with all your insurance needs including homeowners, automobile, watercraft, business and employee benefits.

We work closely with our clients to secure the proper coverage at the best price!

www.melcher-prescott.com | insure@melcher-prescott.com | 603-524-4535



Best Insurance Company

This is what retirement looks like.

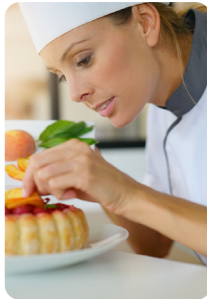



An active community of friends is waiting for you at Taylor.

Taylor Community is located in the beautiful Lakes Region of New Hampshire with campus locations in both Laconia and Wolfeboro. Finding a home at Taylor means more than access to a stunning new cottage or apartment - it means receiving the keys to present and future peace of mind.

Whether you prefer an active lifestyle filled with fitness classes and an extensive lineup of social and recreational opportunities, or would rather enjoy a fine-dining experience with friends after a day spent by the lake...

Taylor is the place for you!



 (603) 366-1400 / taylorcommunity.org
A not-for-profit since 1907

Discover Taylor Community
taylorcommunity.org

Laconia
435 Union Avenue
Laconia, NH 03246

Wolfeboro
83 Rolling Wood Drive
Wolfeboro, NH 03894

Mello
Moose
COFFEE HOUSE

136 Daniel Webster Hwy, Meredith
(603) 677-7037

Great coffee, breakfast sandwiches, and
fresh baked goods to start your day!

TWIN BARN
BREWING CO

194 Daniel Webster Hwy
Meredith



**Bring Ticket Stub To
Twin Barns for 50%
off apps**

The Common Man Family – Setting the Stage for Uncommon Dining



SCAN for MENU

LAGO



SCAN for MENU

LAKEHOUSE

Bay Point at Mill Falls • (603) 279-2253

theCMan.com

Church Landing at Mill Falls • (603) 279-5221



SCAN for MENU

CAMP



SCAN for MENU

TOWN DOCKS

Chase House at Mill Falls • (603) 279-3003

OPEN MAY - SEPTEMBER! • (603) 279-3445

**GERMAN
MOTORSPORTS**

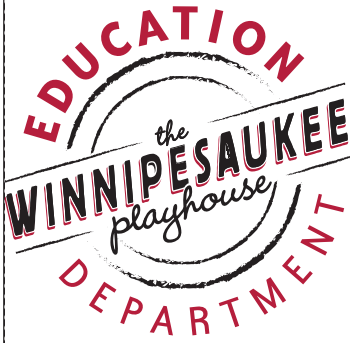
PORSCHE - ROVER - AUDI - VOLKSWAGEN - BMW - MERCEDES - MINI

Authorized BOSCH Service Center



(603) 524-5016 Castrol

www.germanmotorsportsusa.com



The Winnepesaukee Playhouse Education Department promotes the developmentally appropriate acquisition of theatrical skills, fosters a life-long appreciation of the technique, history, and literature of theatre and its ancillary fields of study, and—above all—seeks to inspire its students to use theatre as a tool to develop empathy, with which they may explore and come to better understand the world.



Educational Programming at the Winnepesaukee Playhouse includes:

- Four fully realized productions annually for students ages 8-18
- Summer camps for students ages 5-12
- Focused summer training for students ages 13-18
- Classes and workshops for participants of all ages
- Post-performance talkbacks
- The Symposium Series
- Backstage tours
- Informative articles in playbills
- Teacher training
- College internships
- Theatre and arts education advocacy



For more information...

winnepesaukeeplayhouse.org/education
education@winniplayhouse.org

2024 Subscriptions & Flex Passes

ON SALE NOW!

2024 All Access Pass \$325.00

One ticket to each of the 13 productions/events in the 2024 season (including the special events: *On the Exhale* and *ImprovOlympics*). Additional 10% discount on all other tickets purchased for 2024 productions/events.

2024 Professional Summer Pass \$210.00

One ticket to each of the five (5) professional productions (*Jersey Boys*, *Witch*, *La Cage aux Folles*, *Richard III*, *In the Heights*). Additional 5% discount on all other tickets purchased for 2024 productions/events.

2024 Professional Summer Balcony Pass \$115.00

One ticket to each of the five (5) professional productions (*Jersey Boys*, *Witch*, *La Cage aux Folles*, *Richard III*, *In the Heights*). Seating is limited to the front row of the balcony only. Additional 5% discount on all other tickets purchased for 2024 productions/events.

2024 Flex Pass \$220.00

Five tickets to use however you like. Mix and match performances or productions in any combination.

*The Fine Print:

Passes (and any associated discounts) are not redeemable for rentals or other events produced by a third party. Seats must be reserved in advance and are subject to availability. There are no additional fees associated with redeeming subscription passes. Any unused portion of subscription passes may not be redeemed for cash or credit to your account.

**Stop by the box office or visit www.winnepesaukeeplayhouse.org
to purchase a 2024 subscription**

98.3 Frank ^{fm}™

THE SOUNDTRACK OF THE LAKES REGION!

Join our team

*Hot Mix & Aggregate Sales
Asphalt Recycling & Reclamation
Highway & Site Work Construction*



Find career opportunities at
pikeindustries.com/careers



BRAVO WINNI PLAYHOUSE!

Patrick's
IRISH ROOTS - AMERICAN SPIRIT

patrickspub.com · 603) 293-0841

18 Weirs Rd Gilford, NH



NEW
HAMPTON
SCHOOL

Where Aspiring Artists **TAKE CENTER STAGE**

Whether the arts are a passion or a hobby, there are ample opportunities for professional-level learning at New Hampton School. From the stage to the recording studio, at the ceramics wheel or in the animation lab, our students create in every corner of campus.

www.newhampton.org



The Winnepesaukee Playhouse Presents
the Winni Players Community Theatre in

The Ferryman

By Jez Butterworth

Produced by arrangement with Nick Hern Books

The Production Team

Director.....Cory Lawson
Stage Manager.....Jennifer Simon
Assistant Stage Managers.....Abby Hunt,
.....Savannah Muzzey, Judi Rogato
Scenic Designer.....Ian Olsen
Lighting Designer.....Erica Lauren Maholmes*
Sound Designer.....Zach Glennon
Costume Designer.....Lesley Pankhurst
Technical Director.....Thom Beaulieu
Scenic Artist.....Andrew Stuart
Intimacy Choreographer.....Samantha Griffin
Fight Director.....Jessie Chapman
Props Supervisor.....Amanda Jennison
Props Assistant.....Lore Heywood
Dialect Coach.....Nora Hussey
Costume Assistants.....Kelly Bennett, Nicole Gauvreau
Fight Captain.....Savannah Muzzey
Dramaturg.....Jack Greeley
Backstage Crew.....Ben Rathjen

*Member



UNITED
SCENIC
ARTISTS

The Cast

(In order of appearance)

Lawrence Malone.....	Jim Rogato
Frank Magennis.....	Hazel Heywood
Father Horrigan.....	Jim Gocha
Muldoon.....	Brendan Berube
Quinn Carney.....	Michael G. Baker
Caitlin Carney.....	Kyrie Ellison
Mercy Carney.....	Madeline Duncan
Nunu (Nuala) Carney.....	Kinley McDonough
Aunt Maggie Faraway.....	Lynne Rainen
Shena Carney.....	Anna Cook
Uncle Patrick Carney.....	Ken Chapman
James Joseph (JJ) Carney.....	Louie Laurendeau
Honor Carney.....	Hazel Walsh
Oisin Carney.....	Miles Sargent
Aunt Patricia Carney.....	Tamara McGonagle
Tom Kettle.....	David Nelson
Michael Carney.....	Elliott Giessler
Mary Carney.....	Erin Walsh
Shane Corcoran.....	Rafael Vazquez
Diarmaid Corcoran.....	Cooper Plourde
Declan Corcoran.....	Logan Currier

Thank you to:

Meredith C. Brown, Matt Hutchens, Laura Felgate,
Neil Pankhurst, Lynne Rainen, Jim Rogato, Chris Sousa,
Chris Slater and Gilford Walmart, Laura Stephan

The live animals in this production have been provided courtesy of
Konstellation Farm and we have taken precautions to ensure
their safety.

Setting

The play is set in rural County Armagh, Northern Ireland, late August 1981.

The prologue takes place in Derry, the previous day.

There will be two 10-minute intermissions.

This production contains a water-based, non-allergenic haze effect, and the sounds of gunshots.

The cigarettes smoked in this play are made from herbal tea and do not contain any tobacco or nicotine.

About the Author

Jez Butterworth is one of the UK's leading playwrights. His plays include: *Mojo* (Royal Court Theatre, London, 1995; *West End*, 2013); *The Night Heron* (Royal Court, 2002); *The Winterling* (Royal Court, 2006); *Parlour Song* (Atlantic Theater, New York, 2008; Almeida Theatre, London, 2009); *Jerusalem* (Royal Court, 2009; West End, 2010; New York, 2011); *The River* (Royal Court, 2012); *The Ferryman* (Royal Court and West End, 2017) and *The Hills of California* (West End, 2024).

Mojo won the George Devine Award, the Olivier Award for Best Comedy and the Writers' Guild, Critics' Circle and Evening Standard Awards for Most Promising Playwright. *Jerusalem* won the Best Play Award at the Critics' Circle, Evening Standard and WhatsOnStage.com Awards, and was nominated for the Tony Award for Best Play. *The Ferryman* won the Evening Standard Theatre Award for Best Play, and the Critics' Circle, Olivier and WhatsOnStage Awards for Best New Play, as well as the 2019 Tony Award for Best Play.

His screenwriting credits include *Fair Game* (2010), *Get On Up* (2014), *Edge of Tomorrow* (2014), *Black Mass* (2015), *Spectre* (2015), *Ford v Ferrari* (2019), and *Indiana Jones and the Dial of Destiny* (2023).

For TV, he created and wrote the comedy series *Mammals* for Amazon Studios, and created the historical fantasy drama *Britannia* for Sky and Amazon Prime.

In 2007, he won the E.M. Forster Award from the American Academy of Arts and Letters. In 2019 he was elected as a Fellow of the Royal Society of Literature.

A Note from the Director

Directing a play is always an adventure, but *The Ferryman* has been particularly special to me. I've wanted to work on this play ever since its debut in 2018. The stories I cherish most are those filled with unforgettable characters. If I can find that one character that I really connect with, odds are I'm going to enjoy my experience. When I first saw *The Ferryman*, I found myself drawn to all 21 of its characters. Each person is distinct and important, justified in what they believe, and memorable!

This is a play that explores how big social and political events ripple through the lives of real families. It reminds us of the dangers of silence and the need for communication. It asks us if we can truly ever leave our pasts behind us. The play is all of this, but at its core, *The Ferryman* is about these people, their relationships to each other, and their love of the land and family.

But this isn't just a heavy drama; it's also filled with moments that make us laugh out loud. During a typical rehearsal, the actors will make me laugh and cry, and sometimes they'll have me doing both at once. The greatest joy of this experience has been working with this talented cast, ranging in age from 8 to 80, to bring these characters to life. The energy, enthusiasm, and individuality that each actor brings to the table have enriched our production in ways I never expected.

What I have found truly remarkable is how the family bonds portrayed on stage have mirrored the relationships the cast has forged off-stage. We've laughed together, faced challenges together, and celebrated our victories together. The Winni Players have truly embraced the "community" aspect of community theatre, and this camaraderie and shared joy have been the heart and soul of our production. I believe you will see it reflected in their performances.

I'd also be remiss if I didn't specifically mention the amazing crew and creative team who have worked so hard to fill the Carney home with life. From our incredible stage management team, to our props and costume departments, to the run crew, and all of our designers and administrators, THANK YOU for the hard work that you've put into making this show as special as possible.

I hope you enjoy watching *The Ferryman* as much as we've enjoyed bringing it to life. If you're ever interested in joining The Winni Players and being a part of our growing community, please reach out to us. We have lots of opportunities throughout the year and many different ways to contribute and get involved.

Cheers!

--Cory Lawson

From The Winnepesaukee Playhouse Education Department...

Jeز Butterworth first presented his play, *The Ferryman*, in 2017 to an English audience. Yet the foundation of this Irish family drama is centuries old and grows out of the more recent explosive era that ran from the late 1960s through the late 1990s known as “The Troubles.” The origins of the Troubles date back to centuries of warfare in which the predominantly Catholic people of Ireland attempted to break free of British (predominantly Protestant) rule. However, the northern counties of Ireland were occupied by immigrants directly from England who themselves were predominantly Protestant but more significantly they were loyal to the British crown. In 1921, the Irish successfully fought for independence which resulted in a compromise that partitioned the majority of Ireland into a free state and a smaller separate state of Northern Ireland. Under the majority Protestant rule in Northern Ireland, the minority Catholic population was subject to significant discrimination. While the two factions were often defined by their religious affiliations, the conflict was almost entirely based on the Protestant allegiance to English rule while the Catholic factions were still fighting for a unified and independent Republic of Ireland. Political parties evolved with increasing tensions and violent clashes defining the period of the late 1960s and early 1970s in particular. The Republican faction split with a segment convinced that violence was a necessary tool to overcome discrimination and hopefully achieve a unified Irish rule. That segment became known as the IRA, the Irish Republican Army. The IRA demanded absolute loyalty and any one considered disloyal was “disappeared.” They were kidnapped, secretly murdered, and buried in shallow graves in bogs. To add to the misery of the family, the IRA would then spread rumors of sightings of the victims to prevent closure and prolong the family’s agony over the loss of a loved one, uncertain and hoping for their return.

The play opens with the prologue that announces the discovery of a body that has come to the surface of the bog. It is 1981 and the victim is Seamus Carney who had gone missing during the height of the troubles in 1971. The IRA, now with stronger public relations considerations, has great concerns about how the discovery of the body will be received by the Carney family. Here we witness our first taste of the intimidation and blackmail tactics of the IRA, represented by the thugs Muldoon, Magennis and Malone, as they force the cooperation of the family priest, Fr. Horrigan.

Act One finds us in a farmhouse kitchen in rural Northern Ireland.

So begins this intimate and tragic family drama that explores the impact of deeply entrenched community discord and conflict. Much more has been buried than the bodies of IRA dissidents. Children are raised on folk tales about fierce, warmongering fairies, and who bear the cost of choices made decades ago. Butterworth takes the audience into the heart of a loving family in a story that veers off into ghastly violence. He questions if it will ever end, but the title, - itself a reference to Charon who, in Greek mythology, ferries the dead across the River Styx to Hades and the unburied never rest - hints that deaths will continue.

The play brilliantly relates the tension, violence and dread that rocked Ireland by focusing on a single, extended family, incisively using this domestic microcosm to illuminate the complexities of a society at war with itself.

Prepare yourself. The language is rough at times but the music and dancing are joyous. You will smile and laugh. You might cry. You will be shocked. You will be moved, and hopefully enriched, as Butterworth brings to us the sometimes centuries old impact of violence in societies and the lasting effect of prejudice and trauma passed down through the generations of our families. You will be thinking about *The Ferryman* long after you leave the theater.

--Jack Greeley
Dramaturg

The Cast



Michael G. Baker (Quinn Carney) Michael's work with the Winni Players began back at the Weirs with *Bad Seed* (Colonel Kenneth Penmark) and continued through *Twelve Angry Men* (Juror #6), *The Caucasian Chalk Circle* (Simon), *One Flew Over the Cuckoo's Nest* (Cheswick), *Little Shop of Horrors* (Audrey II Voice), *Harvey* (Dr. Lyman Sanderson), *Of Mice and Men* (Lennie Small), *The Skin of Our Teeth* (George Antrobus), *Lend Me a Tenor* (Tito Morelli), and *Fiddler on the Roof* (Lazar Wolf).

He has also participated in off-site productions, a few of the radio plays, staged readings, and playwriting festivals the Playhouse hosts. It has been extremely rewarding and refreshing getting back on stage with friends old and new. This is a powerful show that has been a challenge to work on. It was made that much easier by working with the extremely talented cast and crew. He hopes you are moved by this show as much as he has been at times. Perhaps we will be able to see things from another perspective when faced with a seemingly insurmountable dilemma. Michael and his most understanding wife Lisa live in Plymouth.



Brendan Berube (Muldoon) is excited and enormously proud to be a part of bringing this incredible show to life. *The Ferryman* marks Brendan's fifth appearance on the Playhouse stage. Previous roles include Henry Saunders in *Lend Me a Tenor*, the Constable in *Fiddler on the Roof*, and multiple characters in the *Miracle on 34th Street* and *Sherlock Holmes* radio plays. He also proudly serves on the Winni Players Committee and the board of directors for The Streetcar Company, and has appeared in numerous shows with Streetcar and the Powerhouse Theatre Collaborative. Away

from the stage, he can be found dotting i's and crossing t's (sometimes literally) as Managing Editor of The Meredith News and other weekly papers published by Salmon Press.



Ken Chapman (Uncle Patrick Carney) has been involved in 20 professional, educational, and community productions as an actor, director, and director's assistant since discovering the Winnepesaukee Playhouse in 2009. In addition, he has performed with the North Country Center for the Arts, Powerhouse Theatre Collaborative, and The Little Church Theatre. He has been a guest actor at Plymouth State College and at LaGrange College (Georgia). He received a NH Theatre Award for his work in *The Laramie Project*. He studied theatre and acting for eight years

before moving to New Hampshire in 1970; now at age 80, he wonders if this show will be his last. If it is, *The Ferryman's* Uncle Pat has been a gift, and he hopes you are moved as he unwraps that gift for you. As always, he thanks Carol for tolerating this passion and for all the precious things in his life.

The Cast



Anna Cook (Shena Carney) has been a part of over 35 theatre productions in the past but this will be her third with the Winnepesaukee Playhouse and she couldn't be more thrilled. Anna has played roles such as Carrie in *Carrie the Musical*, Penelope Pennywise in *Urinetown*, and Hodel in *Fiddler on the Roof*. She has 13 years of dance experience and has been participating in local theatre productions since fourth grade. She is honored to be playing the role of Shena in this amazing production of *The Ferryman*. She hopes you enjoy the show!



Logan Currier (Declan Carney) is delighted to be making his Winnepesaukee Playhouse debut. Favorite past credits include Harvey in *Captains Courageous*, Master Scrooge in *A Christmas Carol*, and Mr. MacAfee in *Bye Bye Birdie Junior*. Logan is a 6th grader at Inter-Lakes Elementary School and is (almost) 12 years old. When he is not acting, Logan enjoys reading, Legos and track and field. He would like to thank his brother Zachary for being his biggest fan.



Madeline Duncan (Mercy Carney) is a 6th grader at Sant Bani School. She enjoys reading, hanging out with her friends and family, and, of course, theatre. She has been in 4 Winnepesaukee Playhouse productions and attended their summer camps for several years. She recently played Lumiere in Sant Bani's production of *Beauty and the Beast, Jr.* Special thanks to her parents for driving her to and from rehearsals and to Cory for directing.



Kyrie Ellison (Caitlin Carney) is a performer and theatrical educator based in Concord, New Hampshire. Generated works include *Weekend Warrior*, *I'd Be All Alone*, and *The Pattern*. Performance credits include *A Midsummer Night's Dream* (Hippolyta, Egeus, Titania, Puck), *Everybody* (Ensemble), *Street Walker, a musical* (Aqua Maureen), *The Trojan Women* (Hecuba), *The Merry Wives of Windsor* (The Hostess of the Garter Inn), *Much Ado About Nothing* (Don John). She holds a B.S. in Musical Theatre from Russell Sage College, an M.F.A. in Theatre from Sarah Lawrence College. Currently, she's working as the Assistant Director of Theatre at New Hampton School. www.ellisonarts.com



Elliott Giessler (Michael Carney) is a 17 year old actor from Tuftonboro, NH. This is Elliott's second show at the Winnepesaukee Playhouse, his first being *Pippi Longstocking* back in 2016. Some of Elliott's favorite roles in the past have been his part as the Beast in Kingswood Theater's production of *Beauty and the Beast*, and his time as Fridrich in Powerhouse Theatre's production of *The Sound of Music*. Elliott has been acting since he was four years old, and is going off to college next fall to major in musical theatre. He would like to thank all of his castmates and directors for making him feel so at home in this new environment, and his friends and family for always supporting his career.

The Cast



Jim Gocha (Father Horrigan) is pleased as punch to be making his debut at the Winnepesaukee Playhouse again. He has appeared in numerous shows throughout the Lakes Region, some professional, some community, some even right here at the Winnepesaukee Playhouse. And two short films, as well. Recently, Jim swapped a thirty-eight year career as a middle school teacher for a full-time gig taking care of his dog, Winston, and staying out of his wife's way. Many thanks to Cory for this opportunity, the cast and crew for the many memories, and his wife, Teresa, for just being his "other half." No one better. Enjoy the show.



Hazel Heywood (Frank Magennis) This is Hazel's first time out from behind the radio play microphones: frequent guests may recognize him from his favorite past roles as Dr. Watson in the *Sherlock Double Feature* and Mr. Sleuth in the *Hitchcock Double Feature*. He's honored to be a part of such an amazing play and share the stage with so many talented Winni Players veterans. When he's not participating in the monthly play reading group or public holiday readings (come join us!!!), or serving on the Winni Players Committee, Hazel is an artist of many mediums as part of the NH LGBTQ+ art group Queerlective. He would like to thank his "boss" Brendan Berube for the carpooling and camaraderie, and the rest of the cast and crew for continuing to make the Playhouse his second home.



Louie Laurendeau (JJ Carney) is excited to be back for his second show with the Playhouse, having played Motel in their production of *Fiddler on the Roof* this fall. Most recently, he has taken part in *In Love With Broadway* and *Just Duet* with Powerhouse Theatre. His hobbies include singing, writing, thrift shopping, and creating visual art. He hopes you enjoy the show!



Kinley McDonough (Nunu Carney) is very excited to be returning to the Winnepesaukee Playhouse where you may have seen her as Quincy in *Mr. Burns, a post-electric play*. She is in 8th grade at Wentworth Elementary School, and enjoys acting in her school productions. Most recently playing Scar in *The Lion King*. When she is not in school, Kinley enjoys snowboarding, playing video games with friends, and learning to play the guitar. She would like to thank her parents for their support and driving her to rehearsals. Enjoy the show!



Tamara McGonagle (Aunt Patricia Carney) is excited to be back at the Winnepesaukee Playhouse for *The Ferryman* and to be working with this wonderful group! Some previous roles include: M'Lynn – *Steel Magnolias*, Mrs. Gibbs – *Our Town*, Joanne – *Company*, Maggie- *Dancing at Lughnasa*, Nurse Ratched – *One Flew Over the Cuckoo's Nest*, and Annette – *God of Carnage*. Thank you for supporting community theatre. Enjoy the show! Love to MJM!

The Cast



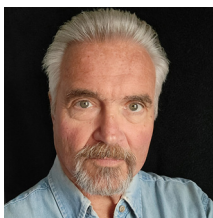
David Nelson (Tom Kettle) is a Lakes Region native who has lent his talents to the stage as a director, producer, and performer in dozens of shows since moving back here to his hometown. He is a versatile actor, comfortable in dramatic roles, and singing in musicals, though he enjoys comedic roles the best, most notably portraying Donkey in *Shrek the Musical*. This is David's first show with the Winnepesaukee Playhouse



Cooper Plourde (Diarmaid Corcoran) is a seventh grader from Gilmanton New Hampshire. This is his first show with Winnepesaukee Playhouse. Cooper has been on stage since he was a toddler in various shows throughout the Lakes Region. Cooper is a competitive swimmer, avid snowboarder, and is looking forward to hiking weather and tennis season.



Lynne Rainen (Aunt Maggie Faraway) This is Lynne's second appearance on the Winnepesaukee Playhouse stage, and she is thrilled to be playing "Aunt Maggie Faraway." Acting credits include "Shaindl" in the Winni Players' production of *Fiddler on the Roof*, as well as Newton Country Players community theater productions *Sweet Charity*, *Ten Nights in a Barroom*, *Chicago*, *Monique*, and *The Fantastiks* among others. She won the New England Community Theatre regional award for Best Actress for her portrayal of Moira in *Talking With*. Singing credits include six years as a member of the chorus of Boheme Opera NJ in operas including *Carmen*, *L'elisir d'Amore*, *La Traviata*, *Madama Butterfly*, *Le Nozze di Figaro*, *Die Fledermaus*, and *Lucia di Lammermoor*. Lynne holds academic degrees in chemistry and biophysics and is retired from successful careers in the medical products and hospitality industries. She wishes to thank Mark, Aaron, Rebecca, and Lola Ruth for bringing joy and love into her life every day.



Jim Rogato (Lawrence Malone) has been performing with the Winnepesaukee Playhouse for almost 20 years and is proud to be a part of this production. "Whether it is a Community or Professional production it is always a positive experience and a great show." Favorite roles have been John Proctor in *The Crucible*, Brundibar in *Brundibar*, Capt. Hook in *Peter Pan*, Sir Bedivere in *Spamalot*, Pseudolus in *A Funny Thing Happened on the Way to the Forum*, Adolpho in *The Drowsy Chaperone* along with many dramatic roles in *Our Town*, *12 Angry Men*, *Of Mice and Men*, *The Guys*, *Diary of Anne Frank*, and many more. Jim can also be seen performing with his DooWop group The Rockin Daddios all over New England. Thank you for coming and enjoy the show.

The Cast



Miles Sargent (Oisin Carney) (they/them) is a seventeen year-old junior from Meredith, NH. They have been in several performances at the Winnepesaukee Playhouse, starring as Mr. Beaver in *Narnia*, Officer Barrel in *Urinetown*, Oedipus in *Oedipus Rex*, Jeff in [title of show], and Viola in *Twelfth Night*. They have also performed at the McEvoy theatre at New Hampton School as Seymour in *Little Shop of Horrors*, Orpheus in *Eurydice*, and Mr. Darcy in *Pride and Prejudice*.

Their most recent performance was at New Hampton School in *Chicago* as Amos. They also play piano and cello, and alongside performing on the theatrical stage, they love to perform on the musical stage as a singer or instrumentalist. When they're not onstage, they have a great passion for music and love composing new pieces to be played for others!



Rafael Vazquez (Shane Corcoran) is very excited to be back at the Winnepesaukee Playhouse for the 3rd time, last appearing in the theatre's production of *Fiddler On The Roof*. Raf currently works full time as a traveling butcher and does theatre in the remainder of his free time. Raf's favorite past credits include *Shrek the Musical* (Donkey), *Big Fish* (Amos Calloway), *Newsies* (Crutchie), *Ride the Cyclone* (Ricky Potts), [title of show] (Hunter) and *Big Fish* again (Edward Bloom). Other stage credits include *Seussical*, *Almost Maine*, *Romeo and Juliet*, *The Secret Garden*, and *Gyps and Dolls*.



Erin Walsh (Mary Carney) is delighted to perform at the Winnepesaukee Playhouse for the second time. She appeared as Fruma Sarah in *Fiddler on the Roof* in the fall. After many years away from acting, she is having so much fun being involved in theatre again. A teacher at New Hampton School for the last 17 years, Erin majored in Spanish and theatre in college and earned a master's degree in education. In her spare time, Erin enjoys spending time with her children, Evelyn and Hazel. Her hobbies include knitting, baking, and reading. She would like to thank her

family, friends, and colleagues for the support they have offered to make it possible for her to participate in this production.



Hazel Walsh (Honor Carney) is a fourth grader at New Hampton Community School. She has been in several shows with the Winnepesaukee Playhouse Education Department, including *Fiddler on the Roof*, *Charlotte's Web*, and *Alexander and the Terrible Horrible No Good Very Bad Day*. Last year she also performed in *James and the Giant Peach* at New Hampton School. In her free time, Hazel enjoys watching anime, reading, and seeing friends and family. Hazel loves shopping, doing well in school, and theatre and is happy doing her sixth play here at the Playhouse.

The Production Team

Kelly Bennett (Costume Assistant) is pleased to be returning to the Winnepesaukee Playhouse for its production of *The Ferryman*. Kelly is a well known face on the Winnepesaukee Playhouse stage in the radio dramas. She has been in *Sorry Wrong Number* (numerous roles), *Yes Virginia There is a Santa Claus* (numerous roles and Andrea Borland), *Vintage Hitchcock* (numerous roles, foley, and Winni Verlock in the Sabotage segment), and recently *The Sherlock Holmes Mystery Hour* (foley and the Vicompte de Verlon in the Haunted Château). Like she did for the Winnepesaukee Playhouse's *Lend Me a Tenor*, Kelly is lending her skills backstage in costuming. An avid costumer, and cosplayer getting to use her costuming skills for this show is a great honor. When she is not in the theater, Kelly is a local vet tech and lives with 4 spoiled house cats.

Jessie Chapman (Fight Director) is the Executive Director of Advice To The Players in Sandwich NH where she has been working since 2007 in various capacities on dozens of Shakespeare-centric ventures. This is Jessie's first time working on a show with the Winnepesaukee Playhouse. Jessie holds a Master's Degree in Performing Arts Management from Brooklyn College. Regional credits include work with Shakespeare & Company, Lincoln Center Theater, Theatre for a New Audience, and the Brooklyn Center for the Performing Arts. Jessie also teaches for several programs at her Alma mater, Plymouth State University. Jessie lives in Sandwich with her daughter, Lenore.

Nicole Gauvreau (Costume Assistant) After appearing in *Fiddler on the Roof* in 2023 and *The Sherlock Mystery Radio Hour* in 2024, Nicole is pivoting to behind the scenes work for the Winni Players. Outside of community theatre, Nicole is the Youth Services Librarian at Pease Public Library in Plymouth and enjoys ballet (dancing and watching), watching operas, sewing, and baking.

Zach Glennon (Sound Designer) is excited to be making his return to the Winni Players! While he was gone from the Winni Players he earned a Masters of Education in Integrated Arts from Plymouth State, while starting his career as a Technology Education Teacher at Moultonborough Academy. He has been working with the Winni Players since 2018 and has worked on almost 60 shows between the Education, Community, and Professional branches at the Playhouse since 2014.

Jack Greeley (Dramaturg) is a recently retired college professor who has moved permanently to the Lakes Region with a home in Belmont. His first foray into community theater was taking a role in *Fidler On The Roof* with the Winnepesaukee Playhouse last fall. Serving as dramaturg for *The Ferryman* offered a new and interesting opportunity to stay involved with the Playhouse. His family has been seasonal residents on Lake Winnepesaukee since he was a child so he is no stranger to the Lakes Region. Jack is blessed with a large extended family with many living in the area. Jack has two sons and three grandchildren who live in Boston. He enjoys the outdoors, both on land and on the water, and spending time on all manner of DIY projects.

Samantha Griffin (Intimacy Choreographer, she/her) is a born & raised New Hampshire theatre artist. She holds a BFA from Columbia College Chicago where her intimacy training began under the direction of TIE Guiding Faculty member Greg Geffard. In the fall she worked as an assistant intimacy choreographer for theatre KAPOW's *The Thanksgiving Play* and is returning for their U.S. premiere of *Paradise Now* as lead intimacy choreographer. This is her first show with Winnepesaukee Playhouse and she wants to send a big thank you to Cory and the whole team for being so welcoming of her practice (as well as Kyrie, for everything).

The Production Team

Lore Heywood (Props Assistant) is excited to be taking a turn backstage for this amazing show. A Winni Players veteran, they've enjoyed getting the chance to learn more about props and scenic development. They'd like to thank Cory for giving them this opportunity, and their patient husband Hazel for putting up with copious amounts of kites, paper mache, and rubber hoses around the house!

Abby Hunt (Assistant Stage Manager) has been working with the Winnepesaukee Playhouse as an actor since they were 6 years old, they are beyond thrilled to have the opportunity to work on the flip side of things especially for such an amazing production such as this one. It has truly been a pleasure learning what it is to be on the production team. We thank all for coming to the show and hope you enjoy the story of the ferryman.

Nora Hussey (Dialect Coach) has directed over a 150 productions in New England since arriving to Boston in 1981. Prior to that she founded an Off Off Broadway theatre in NY. She was the Director of Theatre and Theatre Studies at Wellesley College for 28 years where she was delighted to meet and work with Lesley Pankhurst. She is currently working on a devised theatre piece with her cousin Jonathn Kelliher in her native Ireland.



THE WINNIPESAUKEE PLAYHOUSE EDUCATION DEPARTMENT

THEATRE CAMP

FOR AGES 5-14

Summer 2024 is...
A Trip Through Time

Join us for an unforgettable summer!

Embark on an extraordinary adventure through the ages with the Winnepesaukee Playhouse's 2024 Summer Theatre Camp - "Summer 2024: A Trip Through Time"! Get ready for a time-traveling extravaganza where creativity knows no bounds. From the roaring dinosaurs of the Jurassic to the groovy vibes of the 60s, join us for a summer filled with laughter, collaboration, and the magic of staging original stories that celebrate the whimsical and the extraordinary--through time!

 <p>JURASSIC JAUNT (July 1 - 5)</p>	 <p>MEDIEVAL MISHAPS (July 8 - 12)</p>	 <p>RIDICULOUS RENAISSANCE (July 15 - 19)</p>	 <p>SENSATIONAL SWASHBUCKLERS (July 22 - 26)</p>	 <p>60s GROOVY GETAWAY (July 29 - August 2)</p>	 <p>EPIC 80s ESCAPADES (August 5 - 9)</p>
--	--	---	--	---	---

REGISTER ONLINE TODAY

Visit us at winnepesaukeeplayhouse.org/education or Scan this Code!
Questions? education@winnepesaukeeplayhouse.org / 603-279-0333



The Production Team

Amanda Jennison (Props Supervisor) is thrilled to be making her debut at the Winnepesaukee Playhouse as the props master for this production. With a deep-rooted love for theatre she has worked both on stage and beyond the spotlight, directing vibrant musicals during her time at New Hampton School and mentoring aspiring actors through the Winnepesaukee Playhouse summer camps. She would like to thank Lore for their hard work, Amanda D. for her tremendous support, and Cory for his trust as she worked to create the loved and lived-in interior of this Irish farmhouse (and also for the opportunity to create some of the strangest Amazon shopping lists EVER!)

Erica Lauren Maholmes (Lighting Designer) (she/her) is a storyteller, lighting designer, associate, and assistant for live theatre and dance. She has worked on Broadway as the Assistant Lighting Designer on *The Notebook: The Musical*, and Associate Lighting Designer on *Mary Jane* featuring Rachel McAdams. Her designs have been seen at Trinity Rep, Great Lakes Theater, Idaho Shakespeare Festival, Cape Fear Regional Theatre, KC Rep, Alley Theatre and more. Her education includes: Stagecraft Institute of Las Vegas, West Chester University (BA), and Illinois State University (MFA). She is a proud member of Black Theatre Network, Design Action, and Local USA 829 | IATSE. Insta: @ericalaurenmaholmes
ericalaurenmaholmes.com

Savannah Muzzey (Assistant Stage Manager/Fight Captain) is so excited to have her first behind-the-scenes experience at the Winnepesaukee Playhouse. She's learned a lot through the process and cannot thank her fellow production team enough for the fun times and lessons learned. As for the cast, she would like to thank them for being such a wonderful group to work with. Break a leg, everyone!

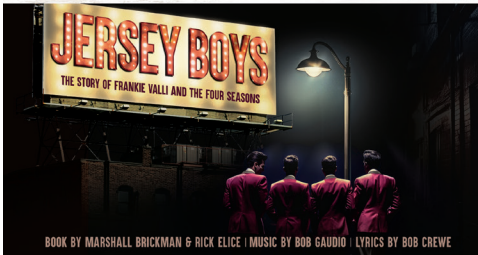
Ian Olsen (Scenic Designer) is so excited to return to the Winnepesaukee Playhouse for *The Ferryman*! He received his MFA in scenic design from Texas Tech University, undergraduate Hartwick College, shout out to The National Theater Institute. Recent select credits include: *Mr. Burns, A Post-Electric Play*; *Sideways Stories from Wayside School*, Winnepesaukee Playhouse; *Simply Simone*, Lincoln Community Playhouse; *The Seagull*, FutureHome Productions; *You're NOT Sick*, Corpus Productions.

Judi Rogato (Assistant Stage Manager) just can't stay away from working on shows in some form or another at the Winnepesaukee Playhouse as this is year 21 of involvement. As one of the Assistant Stage Managers for this show, she has been given the responsibility of the extremely talented "youth". It has been a pleasure working with them and know you will be amazed by their professionalism. Working on another show with Jim, always makes it that much more special.

Jennifer Simon (Stage Manager) has worked with the Playhouse since she appeared as Elizabeth Proctor in the Winni Players inaugural production of *The Crucible*. She was recently on stage in the radio theatre productions of *Miracle on 34th Street* and *The Sherlock Mystery Radio Hour*. Jennifer has been a director, stage manager, and teacher in the Education and Community branches and currently works as a member of the front of house staff. Other organizations she has worked with include; North Shore Music Theatre, Shakespeare & Company, Walnut Hill School, Peacock Players, Stagecoach Productions, Meadowbrook (Bank NH Pavilion), and The Hampton Playhouse. Some favorite projects include; *Picasso at the Lapin Agile*, *Proof*, *Honk! The Musical*, *Peter Pan* with Kathy Rigby, *Chekhov One-Acts*, and *Altar Boyz*. Jennifer also sits on the Executive Board to the NH affiliate of the National Education Association where she works for the betterment of Education Support Professionals.

the WINNIPESAUKEE playhouse

2024 SEASON



BOOK BY MARSHALL BRICKMAN & RICK ELICE | MUSIC BY BOB GAUDIO | LYRICS BY BOB CREWE

JUNE 21-JULY 6



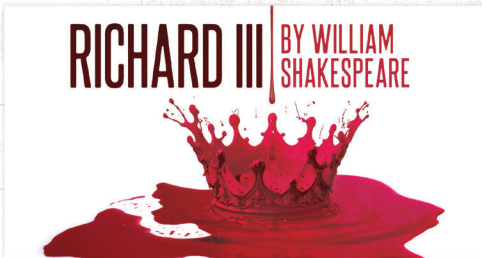
By Jen Silverman

JULY 11-20

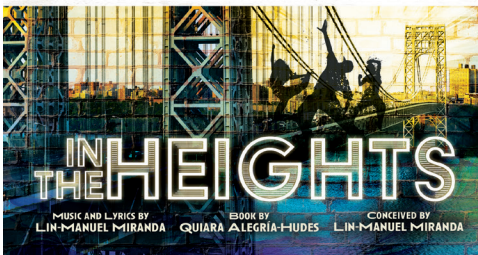


BOOK BY HARVEY FIERSTEIN
MUSIC AND LYRICS BY JERRY HERMAN
BASED ON THE PLAY BY JESSE POLLEY

JULY 25-AUGUST 3



AUGUST 8-17



MUSIC AND LYRICS BY LIN-MANUEL MIRANDA
BOOK BY QUIARA ALEGRIA-HUDES
CONCEIVED BY LIN-MANUEL MIRANDA

AUGUST 22-SEPTEMBER 1



MUSIC BY ROBERT PEASE
BOOK AND LYRICS BY WILHE PEASE
BASED ON THE BOOKS BY ARNOLD LOBEL

OCTOBER 19, 26-27

WINNIPESAUKEEPLAYHOUSE.ORG

603.279.0333

33 Footlight Circle, Meredith NH 03253



A FULL SERVICE LAW FIRM

Estate Planning and Probate
Business & Non-Profit
Real Estate
Employment & Labor
Municipal

Land Use & Development
Telecommunications
Litigation
Environmental
Utility

COUNSELING INDIVIDUALS, BUSINESSES,
ORGANIZATIONS AND MUNICIPALITIES
THROUGHOUT NEW HAMPSHIRE

DONAHUE, TUCKER & CIANDELLA, PLLC

**PROUDLY SUPPORTING THE ARTS
FOR OVER 30 YEARS**

OFFICES IN MEREDITH, CONCORD, PORTSMOUTH, & EXETER, NH

WWW.DTCLAWYERS.COM

1-800-566-0506

Permanent Staff

Thom Beaulieu (Technical Director/Managing Director) is pleased to be a part of the staff at the Playhouse. An award-winning lighting and sound designer, Thom holds a BFA in Drama from Carnegie Mellon University's School of Drama, as well as an MS in Physics from Georgia State University. He enjoys golf, boating, and poker, and lives in New Hampton with his wife Meredith and daughter Molly.

Amanda Dickinson (Production Manager) holds a Bachelor of Science in Speech and Hearing from Elmira College and a Master of Science in Speech-Language Pathology from The MGH Institute of Health Professions, and has been a practicing medical Speech-Language Pathologist for 18 years. She first came to the Playhouse in 2017 as a community theatre actor, and has gone on to work in technical theatre across all three divisions of the organization. Amanda joined the permanent Playhouse staff as Production Manager in 2023.

Donna Findlay (Bookkeeper) joined the Playhouse in 2015 after retiring from a 21 year career at a public utility in Manchester, NH and spending 5 years as a para-educator in the Inter-Lakes School District here in Meredith. She gives unending love and gratitude to Jim, Cortland, John, and grandson Jimmy.

YOUR AD HERE!

Would you like to be a sponsor or program advertiser for our 2024 season? Contact info@winniplayhouse.org for more information!



NORTHEAST MILL SERVICES LLC

Providing quality lumber manufacturing support since 1985.

Plymouth, New Hampshire • 603-536-5730

info@nmsvc.com

Permanent Staff

Cory Lawson (Director/Director of Education and Community Engagement) is a professional actor, director, and theatre educator. He is currently working on his dissertation for his Ph.D. in Interdisciplinary Fine Arts at Texas Tech University, where his research is in theatre festivals and devised works. He has devised and performed in several shows with the Dutch theatre company Orkater, both in Amsterdam and New York City. Cory has also created work with The Living Theatre and helped to found Ready Set Go Theatre, which created the world's first Shakespeare Webisodes. In 2021, he was named National Artist of the Year at the St Louis Fringe. As an actor and director, Cory's work has been seen professionally in New York, in regional theatres across the country, and on-screen in various television episodes and commercials. Cory holds his MFA in acting from The New School for Drama and a BA in Theatre: Performance and Dramaturgy from Roanoke College. He has served as the Associate Director of Education and Outreach at the Alabama Shakespeare Festival, the Artistic Director of The Burktech Players (a neurodiverse theatre company in Lubbock, Texas), and the Director of The Wallace Weekend Players in Levelland, Texas. Most recently, Cory co-founded and served as the Artistic Director of The Outside In Festival, a new nonprofit Theatre Festival showcasing devised works through the fostering and presentation of both national and international artists.

Timothy L'Ecuyer [he/him/his] (Artistic Director) is a theatre director and teaching artist with an interest in work that sits at the intersection of things: the collision of the classical and the contemporary, the mundane and the eternal, the academic and the immediate. He has been the Artistic Director of the Winnepesaukee Playhouse since 2023 and previously served as Director of Education since 2014. His directing credits at the Playhouse include *The 39 Steps*, *Red, Grace and Glorie*, *A Midsummer Night's Dream*, *The Rocky Horror Show*, *Mary's Wedding*, *California Suite*, *The Complete Works of William Shakespeare (abridged) [revised]*, *Shout! The Mod Musical*, *Sweeney Todd*, and fourteen productions with the Education Department. Mr. L'Ecuyer has BAs in theatre and English from Keene State College as well as an MA and MFA in theatre education and applied theatre from Emerson College. He is a former president of the New Hampshire Educational Theatre Guild, an Equity stage manager, and a Teaching Lecturer in the Music, Theatre and Dance Department at Plymouth State University, where he teaches arts management, acting, and dramatic literature. Directing at PSU: *Our Town*, *An Enemy of the People*, *The Curious Incident of the Dog in the Night-Time*, and *Urinetown*. He has worked with many New Hampshire and Boston area theatres including American Stage Festival, Barnstormers, theatre KAPOW, Peacock Players, StageCoach Productions, Greater Boston Stage Company, the Nora Theatre Company, and Underground Railway Theater. timothylecuyer.com

Lesley Pankhurst (Costume Designer/Patron and Company Services Director) is one of the founders of the Winnepesaukee Playhouse. Lesley is a graduate of Wellesley College with an MA in Arts Administration and Cultural Policy from Goldsmiths College, University of London. In addition to serving as the Marketing Director of the Playhouse for its first 13 years, she has also designed costumes for many of its productions and has twice been the recipient of the NH Theatre Award for Best Professional Costume Design for *Two Rooms* (2007) and *The Glass Menagerie* (2008). She is the proud mom of Sophie and wife to the proudly retired Neil.

Thanks

*Thank you for recognizing that art matters.
It takes everyone working together to continue to create great theatre.*

Directors' Circle

\$25,000+

Anonymous
Anonymous
Anonymous
Paul and Sharon Steinwachs

\$10,000+

The Baker Family
Beth and Rich Compson
NH Charitable Foundation

\$5,000+

Richard and Carol Gerken
Laura and Gary Stephan

\$2,500+

Gloria and Irving Fox
Ellie Gordon
John & Muff Walker

\$1,000+

Anonymous
Ray and Karen Abramson
Marc and Carol Bard
Cyrus Bowditch
Mike and Lisa Brien
Jim and Leslie Chapman
Judy Cookman
Ray Craigie and Pam Smarling
James and Bonnie Doherty
The Findlay Family
Chuck and Diane Fray
Liz and Bob Gabel
Julie Hirshan Hart and Jeremy Hart
James Whittredge Hill
Jennifer and Randy Hobbs
Paul and Beverly Jaques
Jason and Izzy McKinney
Susan and Douglas McLane
Sharon and Tom Messmore
Debra Nash
Kate O'Brien
Neil and Lesley Pankhurst
Barbara Pitsch
John and Cleo Robbins
Jason and Deanne Sargent
Carolyn S Scattergood
Ambassador Paul Speltz and
Renee Speltz
Anita E. Springer
Graham and Julia Thomson
Barbara Zeckhausen

to YOU!

Actors' Circle

\$500+

Anonymous
Michael Ames/Half Moon Enterprises, Inc
Bank of New Hampshire
The Denny Knight Family Fund of the Princeton Area Community Foundation
Kelly Dunn
Laura & Rodney Felgate & Gail Barrett
John and Carol Ford
Don and Lou Ann Harris
Susanna High
David and Patricia Immen
Elizabeth Immen
John and Janice Lynch
Joan and David Martin
Louise and Sandy McGinnes
Mark and Susan Primeau
Robert and Margie Sallies
Patricia P Schlesinger
Gil Schohan
Judy and Steve Siegel
John Stenbit
Bruce and Betsy Thomas
Deborah & Paul Walker
Wayfarers Investment Club
Barbara and Gordon Webb
Pamela Winkler
Mr. & Mrs. Brian Winslow
John and Karen Yeigh

\$250+

Anonymous
Anonymous
Janet Baurle
Tony and Terri Bouchard
John Browne
Sarah Bunkley and Richard Smith
James Burke
Bob & Elaine Carangelo
Ken Chapman and

Carol Lowden
Abraham and Lynn T. Dadian
Annie Donahue
Carol and Robert Doretti
Graham Edmondson
David and Claudia Ferber
Kendra and Paul Ferreira
Carolyn & Ken Filpula
Debbie Frawley Drake
Lisa Furlong
Jamie Gegerson
Robert and Eileen Gosselin
Katie Guilmett
Joseph Kelaghan
Kelly Kinhan
Katherine Kinnicutt Family Foundation
Constance Kuekan
Charlotte Lee and Ron Turbayne
Brad and Lynn Leighton
Deborah Leonard Kosits
Lisa Lovett
William and Stefanie Marsh
Alan and Carol Metevia
Jeff and Bobby Morgenstern
In Memory of Jason and Harriett Morse
Kaitlin O'Neil
Diane and Tom Orlovski
Charlotte Otto
Rosemary Pizzuti
Gail Putnam
Kristin Snow
Edward Sonn and Sharon Forde
David Stamps and Judith Buswell
The Truesdale Family
Mark and Kathleen Whitehead
Christian and Debra Zimmermann

\$100+

Anonymous

Anonymous
Anonymous
Anonymous
Miriam Adams
Dalia Aleman
Amazon Smile Foundation
Christine and Carlos Anderson
Cecile Andrews
Delaney Andrews
Rick and Rae Andrews
William Bald
Gail Barrett
Chuck and Sue Bates
George Berman
Craig Betchart
Frank & Nancy Betchart
Peter Bixby
Allison Borowy
Steve and Judy Brown
John Browne
Jay Buckley
Patrick J. Buckley
Michelle Carrier-Trial and Rene Trial
Alison and Christopher Casco
Drs Paula and Ray Chambers
Mark Chiffer
Stephanie Collins
Matthew Croak
Alexa Dembiec
Robert and Patricia DeNoble
Diane G. Dion
Martha Dolben
James Downey
Denise Doyle
Dr Noe
Kim Duncan
Mark G. Edelstein
The Elliotts
Ms. Cornelia Eschborn
Georgene Fabian
Andrew Fleischmann
Gregory Flowers

Actors' Circle (continued)

Michael and Ellen Giguere	Patte and Steve Sarausky	Rebecca Fahey
Lynn Goddard	Robert Sawyer	Daniel and Gail Flannery
Lois Grant	Dennis and Kerry Schneider	Alexis Furlong
Jean Halfmann	Melissa Shakun	Wayne and Shirley Gould
J William Harris	Jack and Doreen Sheppard	Megan Greenstein
Deb Hastings and Fred Wernig	Chris Slater	Rebecca Gregoire
Steve Jenkins	Thomas Staley	Dean Gulezian
Gary D Jesseman	Mr. and Mrs. Fred Strader	Kevin Hall
Mark Johnson and Donna Tasso-Johnson	Monica and Paul Sullivan	Nancy Henn
Christine and Paul Jolie	Pam and Larry Tarica	Andrea Houghton
Susan Karsten	Margaret Turner	Janet Keefe
Pat Kelly	Joyce Tyler	Christopher Kiley
Ira and Lynn Keltz	William Vanca	Carolyn Kobsa
Martin and Brenda Killourie	Deborah Vargo	Eliza J Leadbeater
Bernice and Bernie Kramer	James Wavle	Jonathan and Glenna Lee
Nancy Kubecka	Lindsay Weiner	Nancy and Newbold LeRoy
Maureen Kuharic	\$50+	In Memory of John Morgenstern, from Rob Lubin and Kent Brown
Peter and Linda L'Ecuyer	Anonymous	Charlene Malek
Marc and Carroll Levey	Donna Acox	Alexandra Manoloff
Peter and Maryann Magoun	Marcy Alkalay	Jessie Marden
Dr. Warren & Annette Mason	Kay Anderson	T. J. McCabe, Jr
William McArthur	Sol and Catherine Asmar	Joel Mercier
Robert and Donna McCoy	William Batchelder	Sheila Michalke
Mary and James Michener	Richard and Rosalie Beaulieu	Monica Michalsky & Tom Stankosky
Greg & Regis Miller	Andy Bedford	Gerard and Joanne Morin
In Memory of John Morgenstern	Benevity Community Impact Fund	Linda Morse
Melissa Gabel Morse	Barbara and Charles Birdsey	Savannah Muzzey
Paul Mroczka	Irene and John Bonner	New Hampshire Center for Nonprofits
Sean and Helen Murphy	Matt, Carey, and Emma Cahoon	Jeffery & Jayne Peck
Debra and Timothy Naro	Suzanne Caroselli	Scott Piddington
Margaret and Stephen Ober	The Cottages of Wolfeboro	Andrew Pinard
Deborah Osborne	Jo Ann Clark	Glen Potter
A Parnes	Judith Clayman	Alan Provance
Daniel Patterson	Cynthia and Harvey Creem	Charlene Puzzo
Rosemary and Clive Perry	Emily Dahl	Lynne Rainen
Clayton Phillips	Cara David	Marta Rainer
John and Dorothy Piquado	Hannah Davidson	Tracy and Mark Renaud
Walter and Christine Powers	David and Sylvia Detscher	Rebecca Rigden
The Pundits of Yale	Thomas Dixon	Sebastian Ryder
Mike and Sarah	and Annmarie Karayianes	Elizabeth Sallies
Catherine Richardson	Melissa and Doane	Robert Sears
Sharon Richardson	Dorchester	Sally Sibulkin
The Rickenbachs	Robin Dorff	Cheryl Stocks
Mary and Dave Rogers	Drapcho Family	Sara Tirrell
Joe Sampson	Linda Enderwick	Rafael Vazquez
Carole Sands	Miriam Erick	Randy and Terrie Verzillo
		Lu Ann Walsh
		Richard Williams

All Other Gifts

Anonymous
Anonymous
Tracy Aber
Elizabeth Ahl
Sharon Aronovitch
Eileen Bates-Bordies
Karen and Paul Bemis
Joan Besing
Bert Bosse
Roberta Brayer
Karen Brickman
Russell Brummer
Elizabeth Bulasko
Kevin and Mary
Ellen Canty
Janice Cardarelli
Melody Carter
Alyse Castonguay
Bill Charles
Vickie Chase
Tyler Christie
Paul Ciborowski
Patti Cohen Hecht
Bob and Lynn Crosby
Timothy Cullen
Michael Daebler
Alexander Davis
Beth Day
Judith Dean
Susan Denoncourt
A. Robert Dionne
Maryann Dodge
Sarah Duffley
Richard Duke
Clark Dumont
Kerri Dutile
Jean Etter
Melanie Flanagan

Mark and Linnea Fraser
Darlene Fritz
Christina Fuller
Frank Garcia
Virginia Gassman
Amy Grimm
Jennifer A Grunbeck
Nancy Hall
Madeline Hanafin
Hannaford Community
Bag Program
Jennifer Hanson
Janis Hardiman
Ann Hebert
Andrew Hendrick
Susan Henkel
Hazel Heywood
Alison Hildebrand
Joia Hughes
Amanda Jennison-Sousa
JM
Karen Kharitonov
Valerie and Karl Kimball
Kathryn Kittredge
Pamela Klingler
Kathy Lacey
Charles Lambert
John & Nancy Law
Cory Lawson
Lynn Lawson
Nathalie Leclair
Michelle Levinson
Denise Livingstone
Thad Long
Cassandra Lovering
Heidi Luscher
Mark Macdonald
Debra Macone
Cassandra Mason

Jennifer Mastergeorge
Marcia McCaffrey
Deirdre A Meehan
Donald R Meeken
Daniel Moody
Paul Nelson
Janette Pearson
Penny and Paul
Normand Pinette
Catherine M Pitari
Karen Plummer
Michael Portrie
Veronica Rosa
Janine M. Schifino
Linda Schocken
Jennifer Simon
Angela Smith
Lori Smock-Joyal
Dana and Andy Snyder
Susan Swain
Jennifer Szendre
Allison Szklarz
Evelyn Tate
Judy Taylor
Bruce and Pam Thayer
Marie Valliere
Valerie Verge
Patricia Weston
Kim Whitney
Amanda Whitworth
Shelley Wieler
Lowell Williams
Patricia Williams
Alyssa Yolda
Lorna Zammett

*Donation list dated
2/3/23 - 2/2/24*

Morgenstern Sustainers

Anonymous
Anonymous
John and Linda Browne
J.W. Hill, Consultant
Sarah Bunkley and
Richard Smith
Alison and Christopher Casco

Katie Guilmett
Julie Hirshan Hart and
Jeremy Hart
Jennifer and Randy Hobbs
Ira and Lynn Keltz
Susan and Douglas McLane
Kaitlin O'Neil

Joe Sampson
Jason and Deanne Sargent
Mary and Dave Rogers
Graham and Julia Thomson
John and Muff Walker
Brian Winslow

These are people who participate in the continued success of the Playhouse through their recurring gifts, and we are so grateful for the ongoing support.

We appreciate your support!

Did you know that in typical years ticket sales only account for about 50% of what it takes to run the Winnepesaukee Playhouse?

Sadly, these have not been typical years recently. But patrons just like you have been so supportive and generous. No gift to the Playhouse is too small, and every donation helps us keep artists employed and audiences entertained throughout the year. If you would like to become a donor, or make an additional donation, your tax-deductible gift will be instrumental in helping to ensure the Playhouse can continue to provide the level of programming you have come to expect.

You can make a donation today by visiting the box office, calling us at (603) 279-0333, or visiting our website: www.winnepesaukeeplayhouse.org

Is it time to take your involvement to the next level?

- You could make a one-time gift of \$100
- Join the Morgenstern Sustainers with a monthly gift of \$10
- Join our Directors' Circle at \$1,000 a year (\$85/month)

You can be the one to inspire, engage, and entertain the community by making a tax-deductible gift. You can mail us a check, use your credit card online or over the phone, or stop by the box office today.

There are even more creative ways to support the Winnepesaukee Playhouse!

Have you ever considered including the Winnepesaukee Playhouse in your will? A gift through your will or estate plan enables you to support our mission and make a difference in the future of the Winnepesaukee Playhouse. Did you know you can use your IRA required minimum distribution to make a tax-free donation to a non-profit like the Winnepesaukee Playhouse?

Questions? Speak with your financial advisor, or contact Thom Beaulieu at 603-279-0333 or thom@winniplayhouse.org.

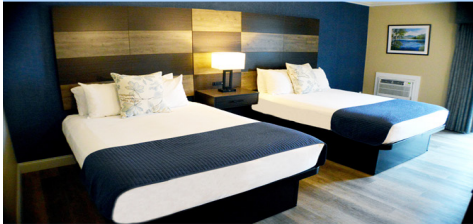


THE MARGATE
ON • WINNIPESAUKEE



LOCATED ON 400 FEET OF PRIVATE SANDY BEACH ON THE SHORES OF LAKE WINNIPESAUKEE

- ⊙ LAKE VIEW & BEACH FRONT ROOMS AVAILABLE
- ⊙ INDOOR & OUTDOOR POOLS
- ⊙ WHIRLPOOL, SAUNA, FITNESS CENTER
- ⊙ BEAUTY SALON & SPA
- ⊙ WEDDING, GROUP EVENT, AND CONFERENCE FACILITIES
- ⊙ FREE WIRELESS INTERNET
- ⊙ ARCADE GAME ROOM
- ⊙ PRIVATE BEACH BAR & 400' SANDY BEACH
- ⊙ MULTI-NIGHT DISCOUNTS AVAILABLE!
- ⊙ ... AND MUCH MORE!



76 LAKE ST, LACONIA, NH ♦ 1-800-MARGATE
WWW.THEMARGATE.COM

THE FITNESS
Edge

BOOT CAMP PLUS | INDOOR CYCLING | TOTAL BODY TONE
BARRE | POSTURE | YOGA | ZUMBA | TRX AND MORE!

WE OFFER
LIVE & ZOOM
CLASSES

169 DANIEL WEBSTER HIGHWAY
MERIDITH NH

78 WHITTIER HIGHWAY
MOULTONBOROUGH NH

OFFERING NH LAKES REGION 2 CONVENIENT HEALTH CLUB LOCATIONS!



(603) 279-0411

WWW.THEFITNESSEDDGENH.COM

Birch Hill
BOOKKEEPING & CONSULTING

James W. Hill
Owner

Mailing Address:
Post Office Box 101
Moultonborough, NH 03254-0101
Cell: 603-476-2521
Fax: 1-877-495-6388

Have Laptop. Will Travel...

email: jim_hill_nh@yahoo.com

Visit us online at www.birchhill.net



JOE WALKER Marketing Services

"Vision without action is a daydream.
Action without vision is a nightmare."

-Japanese Proverb

Does your business have vision?

- Strategic business plan development
- Promotional / advertising plans
- Marketing plans
- Non-profit fundraising plans
- Presentations / guest speaking

JoeWalkerMarketing.com
info@joewalkermarketing.com
603-731-0693

Franchisee
Call 603-369-4376
to advertise.



Specializing in
social media marketing
to help small businesses
grow their online presence



KLWConsulting@outlook.com
klwconsulting.net

CHRISTOPHER P. WILLIAMS ARCHITECTS, PLLC

PO Box 703 • Meredith, NH 03253 • 603-279-6513
www.cpwarchitects.com



Our award winning firm has provided innovative and environmentally sensitive design solutions since 1984. We specialize in sustainable building practices and offer expertise in incorporating green systems into client projects to enhance and protect the ecosystem, and conserve natural resources. We strive to design buildings that fit into their cultural context and environment.



MIRACLE FARMS

LANDSCAPE CONTRACTORS

Moultonborough, New Hampshire (888)288-8252



Extraordinary landscapes begin here!

- Landscaping
- Maintenance
- Hardscapes
- Mulch/Loam/Compost
- Firewood Dry/Green

603-253-9292

www.miraclefarmslandscaping.com



The Winnepesaukee Playhouse is grateful to the following foundations for their support.



STEINWACHS FAMILY
FOUNDATION



New Hampshire
State Council on the Arts



NEW HAMPSHIRE
CHARITABLE FOUNDATION

The Winnepesaukee Playhouse is supported in part by a grant from the New Hampshire State Council on the Arts & the National Endowment for the Arts.

Supporting the Arts
LAURA & GARY STEPHAN

In loving memory

Dorothy Marie Schrader

Gerald Lewis Schrader



The Laconia Daily Sun

Online at laconiadailysun.com

Daily Newsletters • Home Delivery (603)737-2020



1-800-CAMARO-1
(603) 286-8087

New & Used Parts
Cars, Trucks, SUVs
Foreign Domestic Hybrid

112 Clark Rd, Tilton, NH 03276 www.camaroheaven.com

Used Cars Bought and Sold
We Will Pick Your Unwanted
Vehicle Up!

Chuck Drew - Owner

**The community we service
is the community we support.**

We thank our local communities for trusting us to be there when they need us, and are proud to do our part in supporting them.



Reliable Deliveries | Responsive Service

www.deadriver.com



**Winnepesaukee Playhouse
Merchandise
For Sale in our Lobby!**



 **invisalign®**
TouchUp!

Are your teeth out of alignment
and need a Touch-Up?
Need a new set of Retainers?

*Give Dr. Kennell
a Call Today!*





Dr. Alan F. Kennell



 **KENNELL**
ORTHODONTICS

KennellOrtho.com | 524-7404 Laconia | 536-7404 Plymouth | 444-7403 Littleton

Before the Play
enjoy dinner at

 **CANOE** *or*  **STEAKS & SEAFOOD**

253-4762
Center Harbor

524-9373
Lakeport

www.magicfoodsrestaurantgroup.com

Prescott  *Farm*

Environmental Education Center



After the play—

we'll help you find ways to *play*
outside!



928 White Oaks Road, Laconia
603.366.5695 prescottfarm.org

Our Real Estate Goals are simple....

They're Yours!



Scott Knowles

603.455.7751

scottknowles@metrocast.net

Chris Adams

603.393.7993

adamschris195@gmail.com

Chris Kelly

603.677.2182

chriskelly@baysidenh.net



We have everything you need in real estate

208 Daniel Webster Highway, Meredith, NH 03253

(603) 279-0079

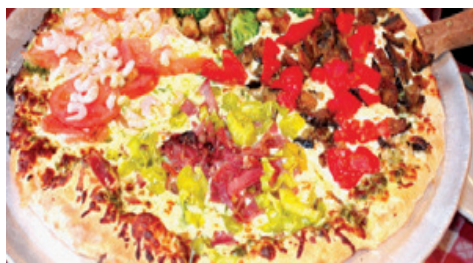
604 Main Street, Laconia, NH 03246

(603) 527-8200

www.baysideplatinumgroup.com



Very Music Very Italian & Very Good!



Celebrating
35 Years!

Giuseppe's *Pizzeria & Ristorante*



**This unique and popular restaurant is
one of the Lakes Region's most loved since 1989!**

Serving Award-Winning Gourmet Pizza, Pasta, Seafood,
Steak, Chicken, Veal, Vegetarian, Vegan, Gluten-Free,
Soup, Salads, Desserts, Cappuccino,
Beer, and a fabulous selection of Wine and Spirits!

Lunch and Dinner Daily

Reservations are highly recommended and greatly appreciated!

Located on the corner of Routes 3 & 25
Mill Falls Marketplace, Meredith, NH

**Call (603) 279-3313
For Reservations & Take Out
Visit giuseppesnh.com**

LAKES REGION COMPUTER



**Over 27 Years In
Business!**

**Your One Stop Shop for
all things Tech**

IT Business

Services:

Computer Systems and Network
Installations
System Monitoring and
Management
Backup and Disaster Recovery
Security and Compliance
Cloud Solutions
IT Inventory and Planning
On-site and remote Support
Wireless Network Planning and
Installations
Security Cameras
Nextiva Business Phone Systems

Visit Our Retail Store!

Verizon Authorized Retailer
Apple Authorized Service Provider
Apple, PC, and Phone Accessories
iPhone and Computer Repairs



Scan Me!



WHERE TO FIND US?

12 Main St Center Harbor, NH 03226

Phone: 603-253-9847

Online: lakesregioncomputer.com

 @lakesregioncomputer